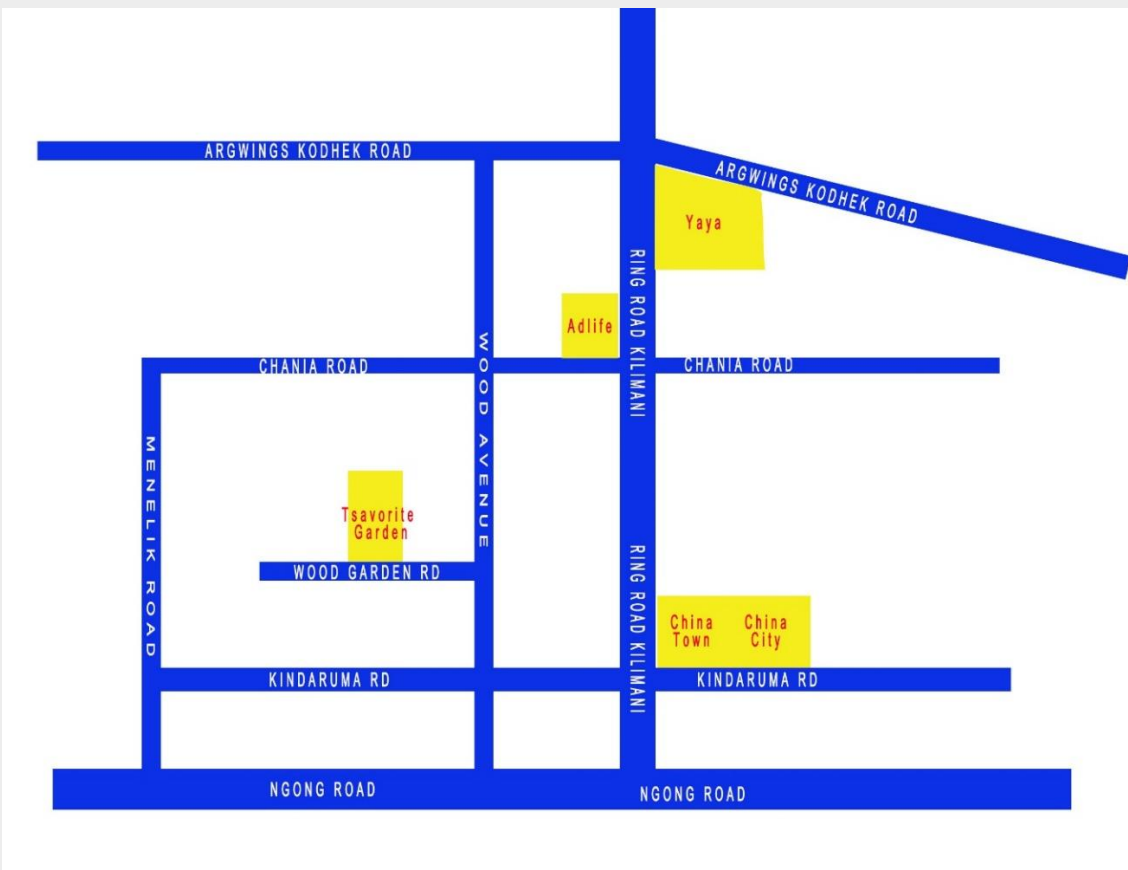


TSAVORITE GARDEN

along Wood Garden Road, off Wood Avenue

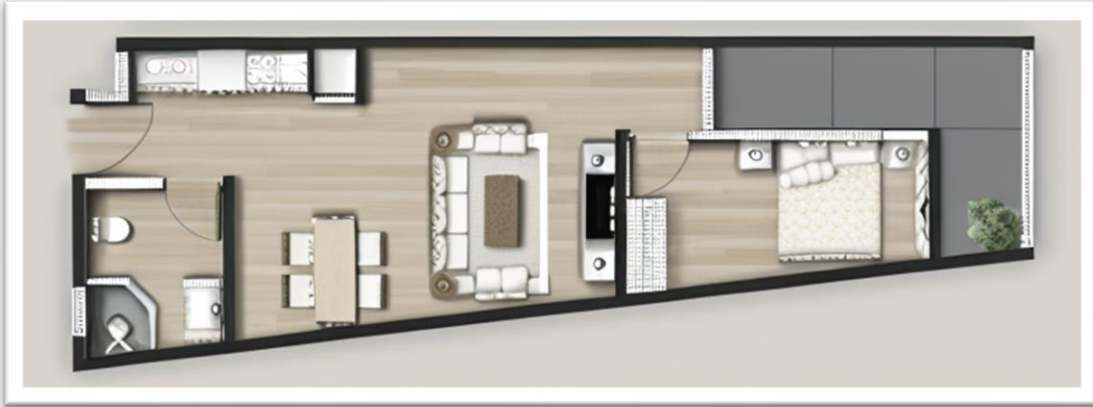


LOCATION



Along Wood Garden Road, off Wood Avenue.

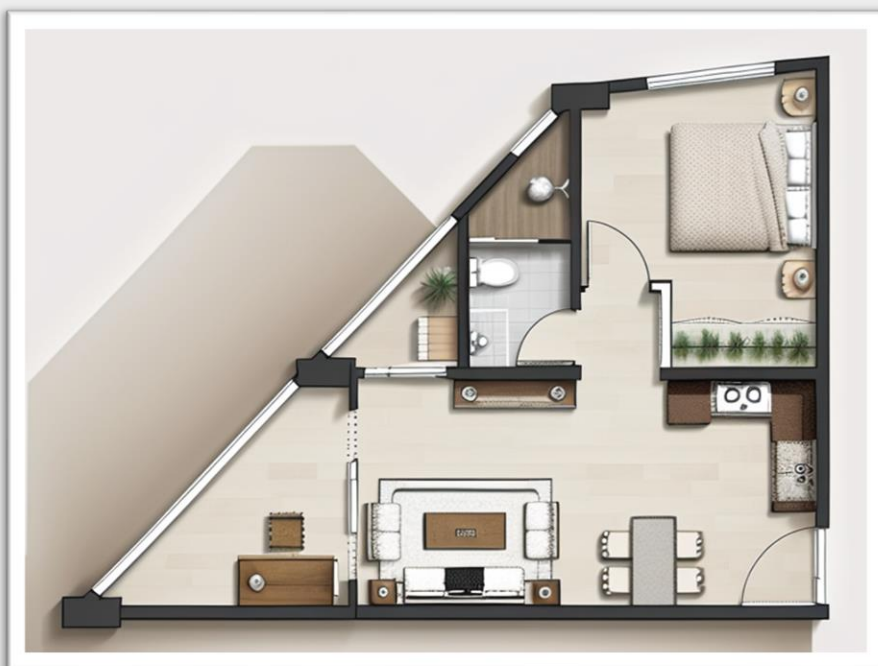
HOUSE TYPE



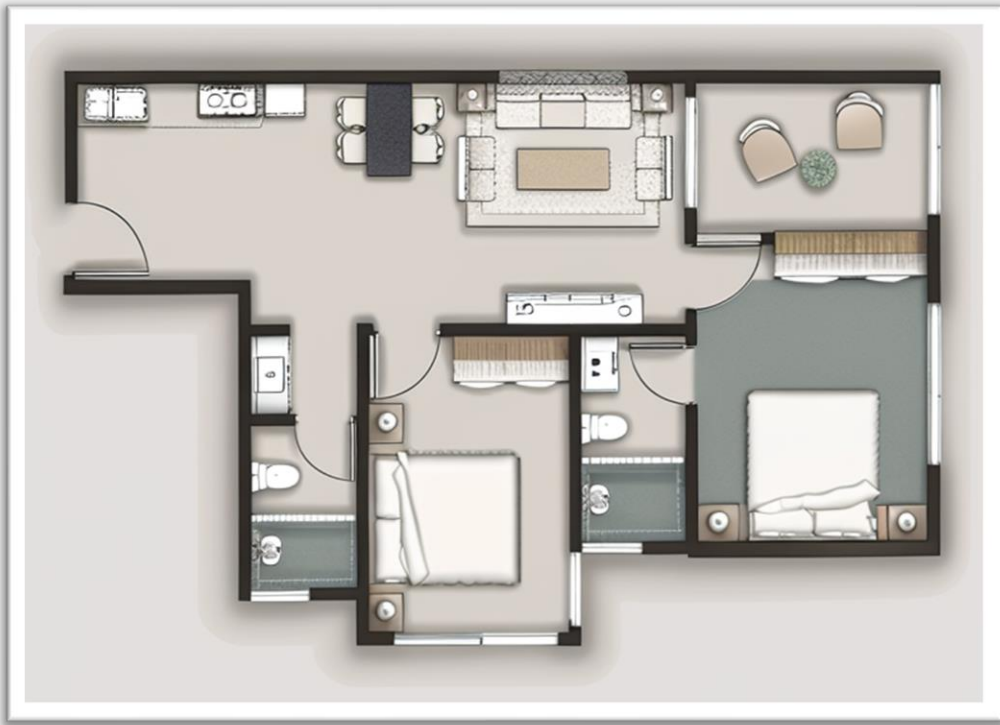
1BEDROOM, APT. No. A09, B09. 55M² 592sqf.
Cash Kes.5.5M, Instalment 5.9M



1BEDROOM APT. No. A08, B08 55M² 592sqf.
Cash Kes.5.5M, Instalment 5.9M



1BEDROOM+STUDY ROOM, 65M² 700sqf. APT.B05
Cash Kes.6.5M, Instalment 6.9M



2BEDROOM T1 ,90M² 968sqf. APT.No. B04, D04
 Cash KES8.5M Instalment 8.9M



2BEDROOM T2 100M² 1076sqf APT.No. A06, C06
 Cash KES9.5M Instalment 9.9M



2BEDROOM T3 100M² 1076sqf.
Cash KES9.5M Instalment 9.9M

APT.No. A01, A02, A03, A05, B01, B02, B03, C01, C02, C03, C05, D02



2BEDROOM T4 112M² 1205sqf
Cash KES10.5M Instalment 10.9M

APT.No. A04, D01, D03



3BEDROOM 125M² 1345sqf APT.No. A07, B06, C07, D06
Cash KES12M Instalment 12.5M

Other Amenities;

Commercial Shops, Borehole, Backup Generator, High-Speed Lifts, CCTV, Access Control System, Ample Parking, Centre Garden, Rooftop Terrace.