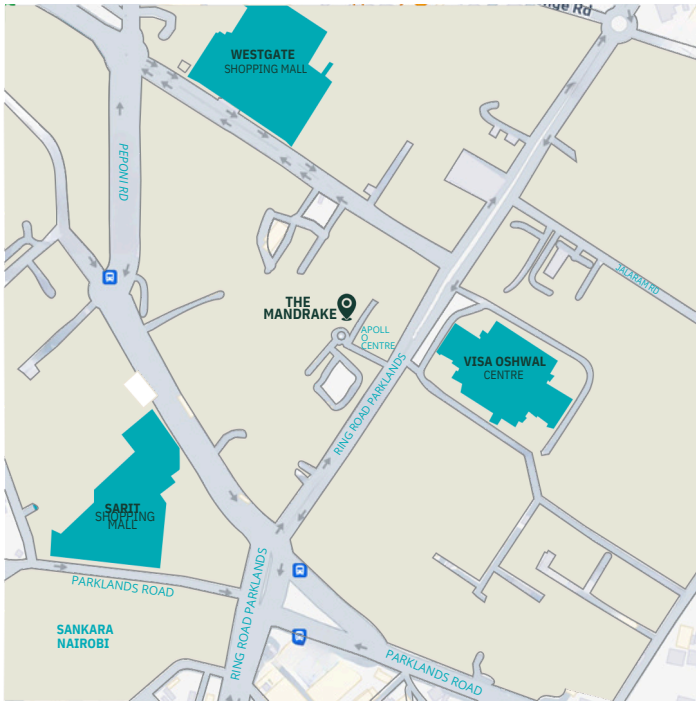




THE MANDRAKE
DESIGNED WORKSPACE

A PLACE FOR PROGRESS



**Nestled in the heart of Westlands,
The Mandrake stands as a green oasis
in the bustling borough.**

Westlands Offices: 5 mins • CBD: 10 mins
UN Complex: 15 mins • Airport, JKIA: 20 mins

Shopping Centres: 5 mins • Places of Worship: 5 mins
Westlands Hotels: 4-6 mins

THE MANDRAKE
DESIGNED WORKSPACE

PHILOSOPHY

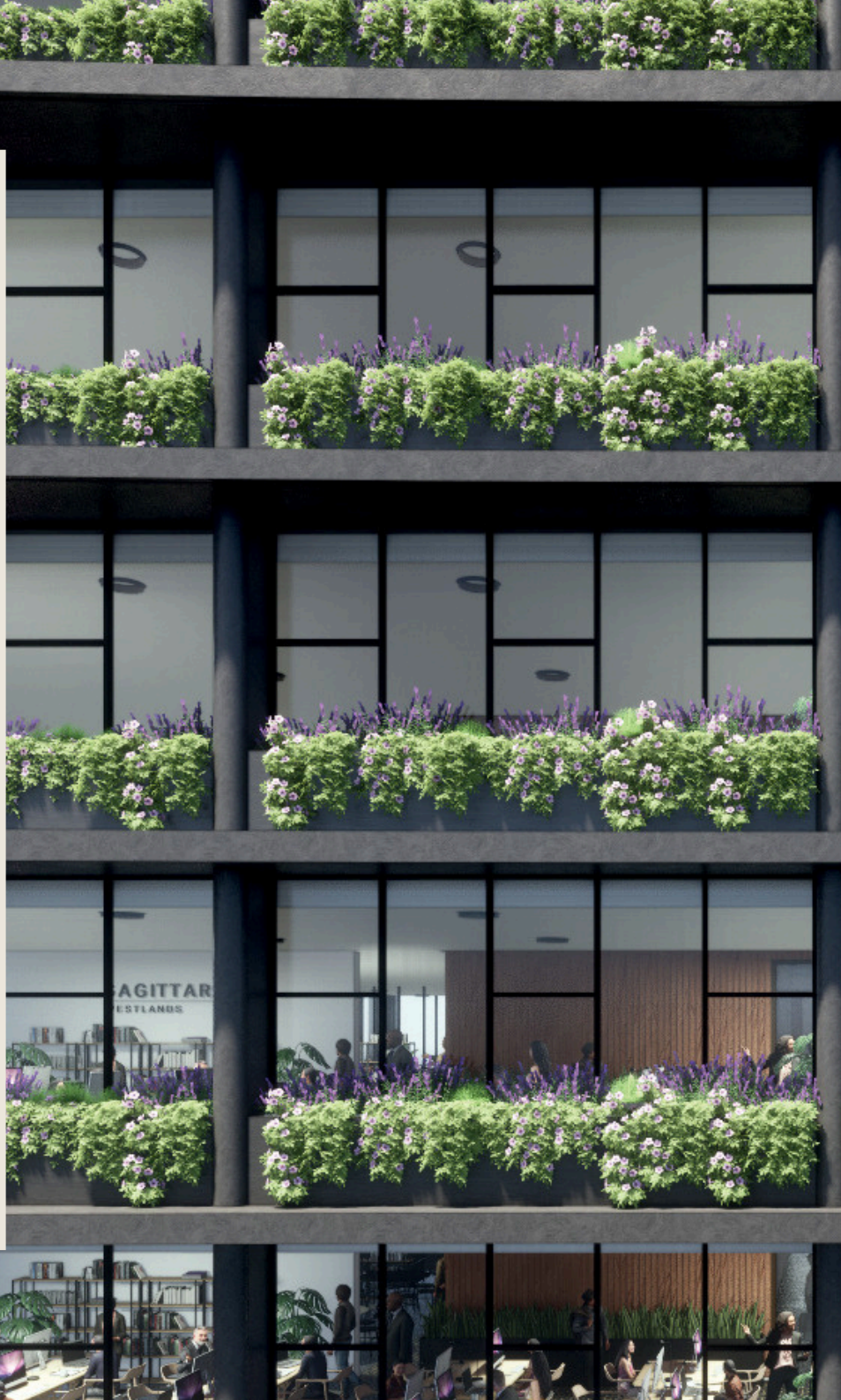
At TheMandrake, we have redefined the workspace by embracing a philosophy that transcends mere functionality. Our commitment to work-life balance and a thriving community fosters creativity, collaboration, and success.

Inspired by Kenyan Modernism, the ash-bound concrete superstructure emerges from a generic landscape as a new Kenyan icon, draped in indigenous fauna, paying homage to timeless concepts while moving forward to meet the demands of the contemporary world by providing accessible green spaces that usher a new era of inspired work.



WHERE DESIGN IS SUSTAINABLE

TheMandrake stands as a beacon of sustainability, utilising cutting-edge materials and eco-conscious practices at its core. The timeless yet contemporary facade features integrated planters of trailing vines and succulents, providing not just aesthetic charm but also passive sun-shading, air filtration, and cooling through Evapotranspiration. This innovative approach establishes a harmonious connection between the indoors and the outdoors, solidifying the sense of modernity that it is so prominent in its design.





The image shows a multi-story office building facade with a grid of large windows. Each window is topped with a planter box overflowing with green foliage and purple flowers. The building has a dark, modern aesthetic. A dark green overlay on the right side contains project details. At the bottom, a small section shows an interior view of a reception area and a workspace.

Amenities:

Security + Concierge

Floors: 16

Expanded Rooftop Terrace: 1

Ceiling Heights: 3.325 m2

Floor Plates: Flexible

Parking: 247

Lifts: 3

Leasing: Q4 2024

SCAN FOR
INTERIOR WALK THROUGH

LAYOUT



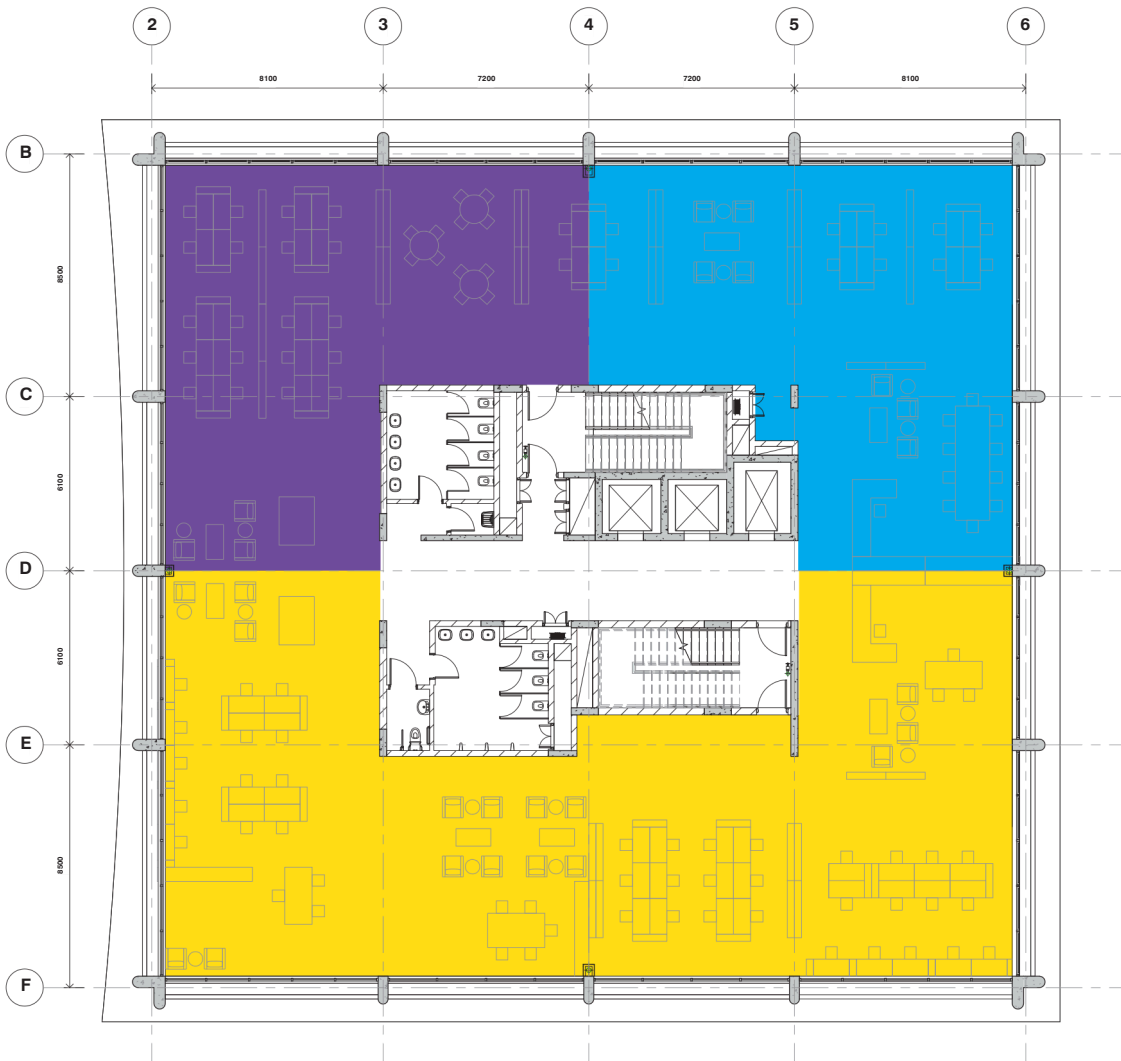
6



- ↖ N
- ① Lift Lobby
 - ② Lift Core
 - ③ Emergency Staircase
 - ④ Male Bathrooms
 - ⑤ Female Bathrooms
 - ⑥ Accessible Bathroom
 - ⑦ Janitors Closet
 - ⑧ MEP Duct
 - ⑨ Kitchen **

LAYOUT

Floor-plate Type A



Rent
\$1.30 + VAT per sqft

Service charge
\$0.2 + VAT per sqft

Car park
\$100 + VAT
per month per bay

+254721988282/; info@spaceluxrealtors.co.ke