



EXQUISITE 1, 2 & 3 BEDROOM  
Units in the Heart of the City



Capital GARDEN  
Where Urban Living Comes Natural



## **CAPITAL GARDEN**

***Where Urban living comes natural***

---

Capital Garden presents a once in a lifetime opportunity. It is remarkably rare that a prestigious scheme on such a grand scale is created at the heart of the capital.

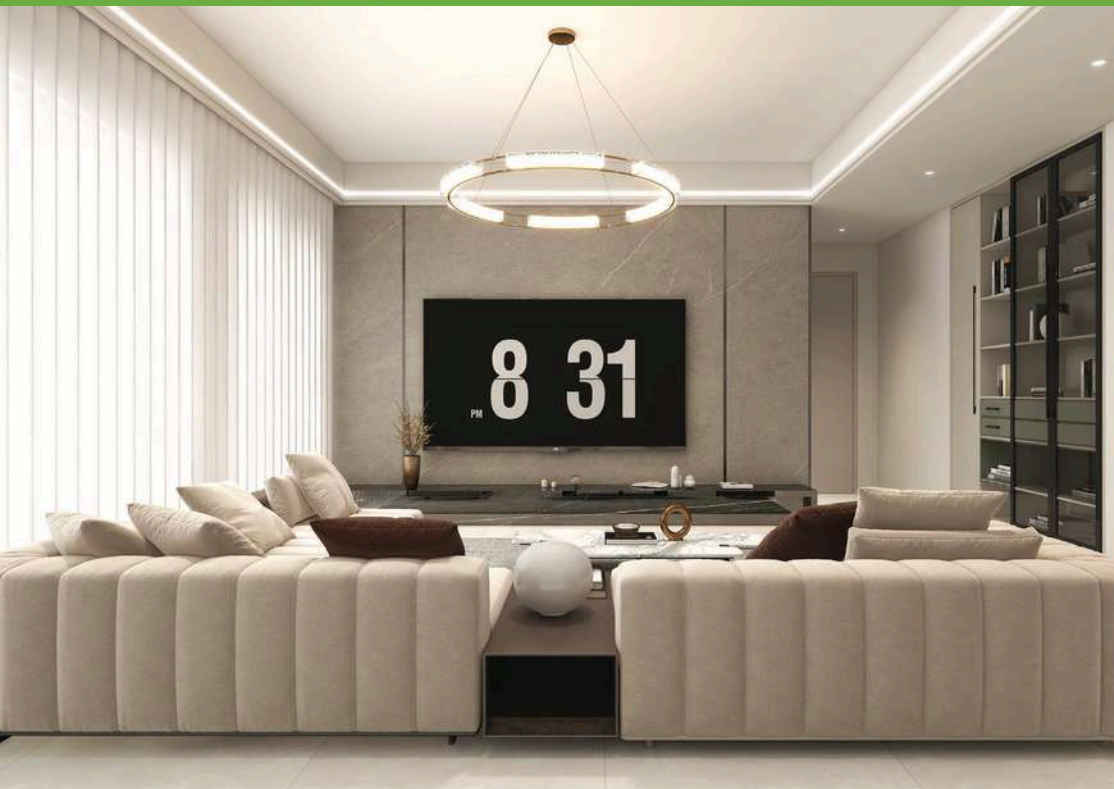
Moments away from the Nairobi Central Business District.

With the stunning views of the city skyline coupled with spacious interior space, an expansive roof terrace, a swimming pool, children play area, lobby, gym and sauna; Capital Garden gives you all the reasons to make this your investment or residence property.

Designed and finished to the highest standards inside and out, this is an opportunity to come home to the ultimate address in the most exciting city in East and Central Africa.

Welcome to Capital Garden Luxurious Apartments, Kilimani.





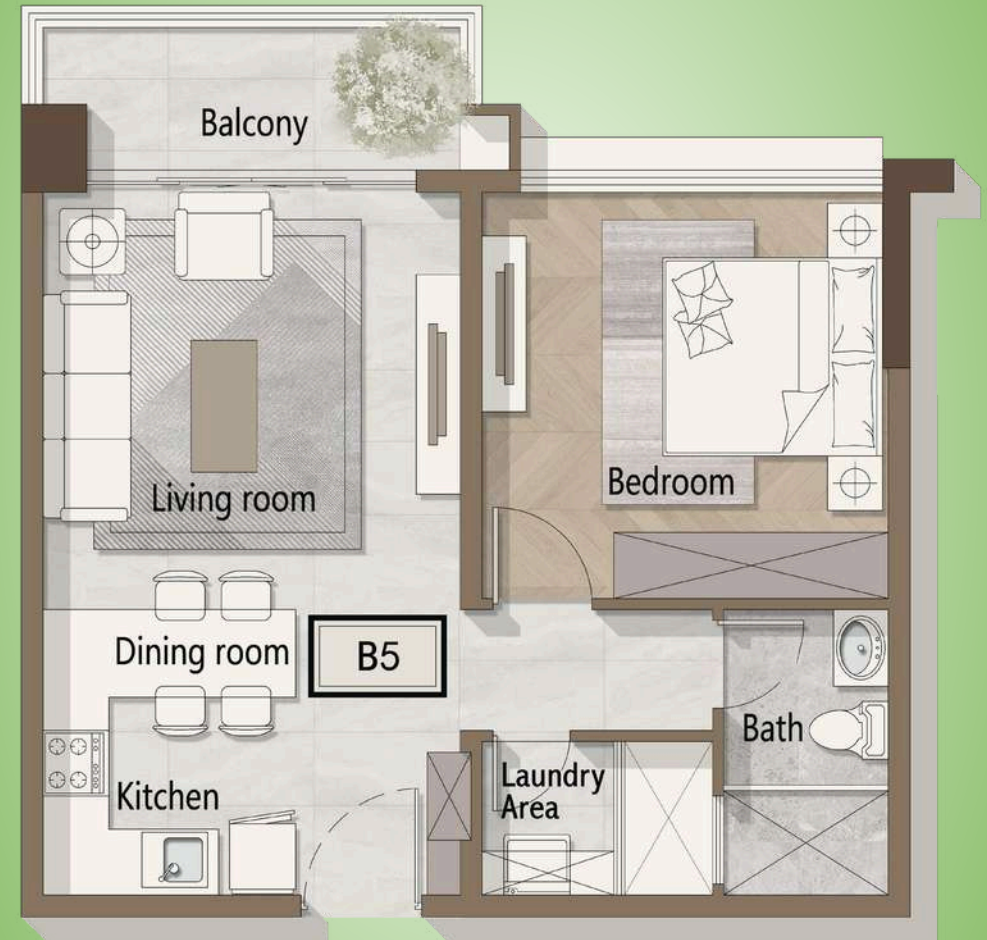


## 1 BEDROOM UNITS

- Entrance into open concept living space - dining area and lounge
- Open plan kitchen fitted with imported appliances
- Large windows to maximise flow of natural light
- Private balcony giving you a breath taking a view
- Private laundry area
- One bedroom with ample closet space and large windows
- 
- Access to balcony from living room

## APARTMENT B5

65m<sup>2</sup> / 700ft<sup>2</sup>



# APARTMENT B1

68m<sup>2</sup> / 732ft<sup>2</sup>



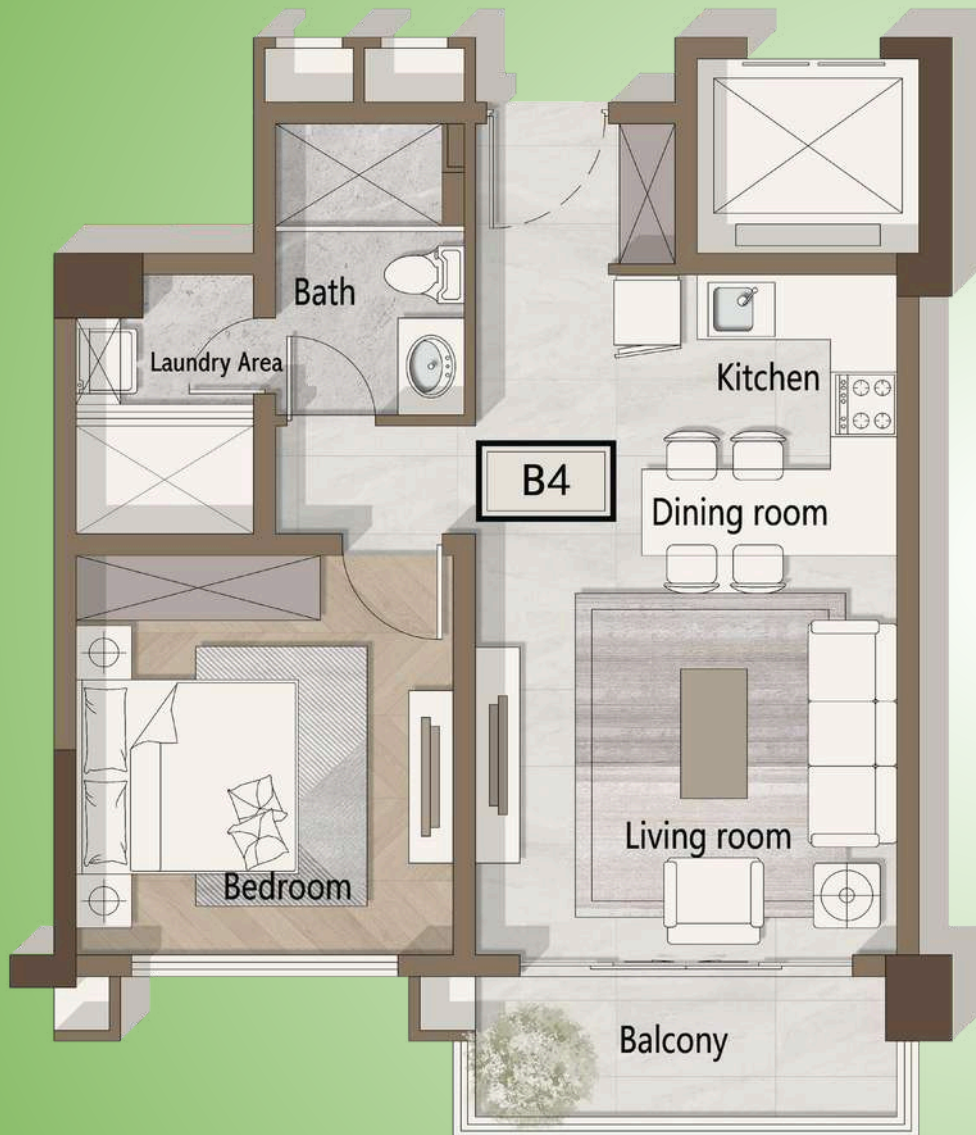
# APARTMENT B2

68m<sup>2</sup> / 732ft<sup>2</sup>



## APARTMENT B4

68m<sup>2</sup> / 732ft<sup>2</sup>



## APARTMENT B3

71m<sup>2</sup> / 764ft<sup>2</sup>

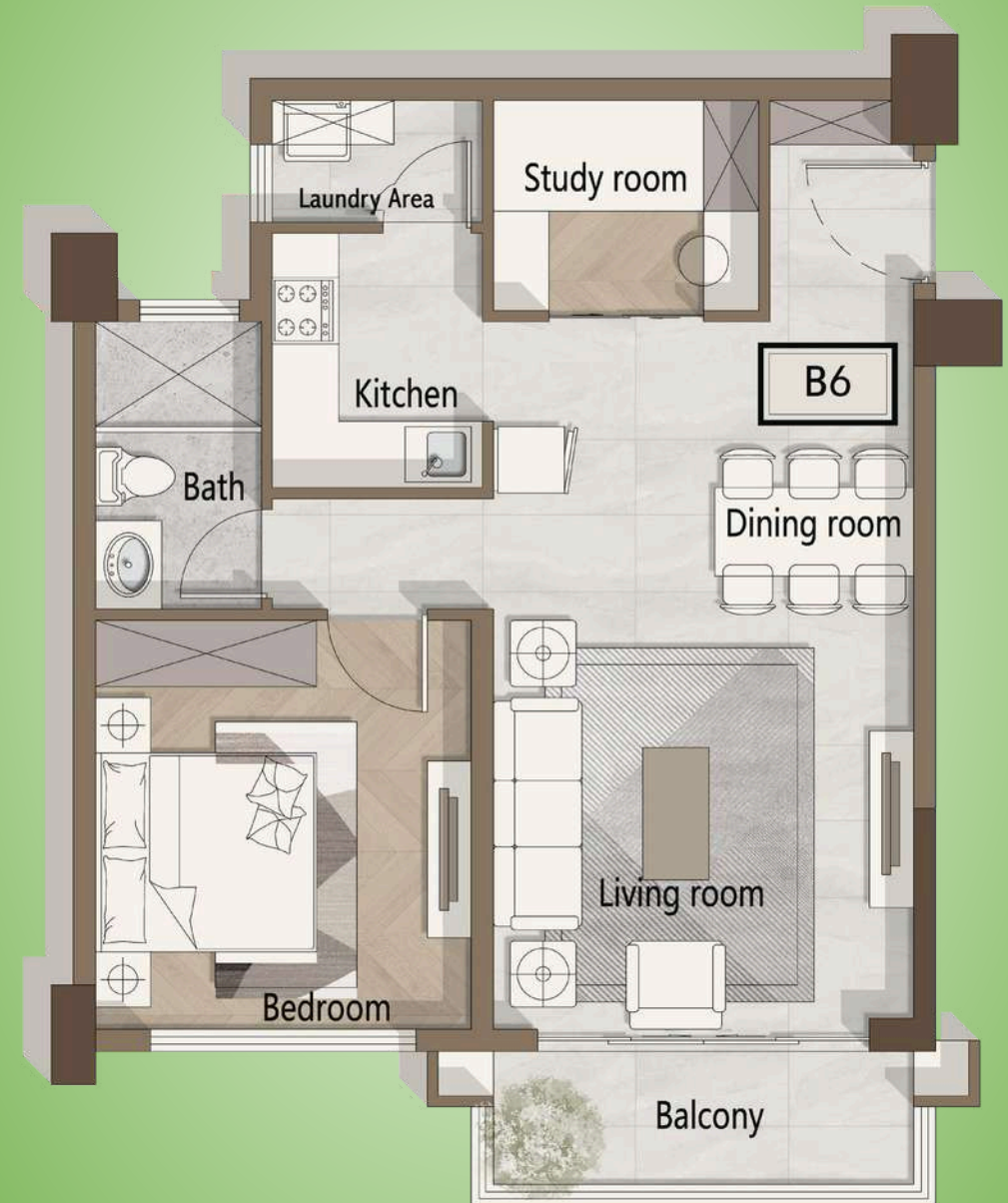


## 1 BEDROOM UNIT with STUDY ROOM

- Entrance into open concept living space - dining area and lounge
- Open plan kitchen fitted with imported appliances
- Large windows to maximise flow of natural light
- Private balcony giving you a breath taking a view
- Private laundry area
- One bedroom with ample closet space and large windows
- 
- Access to balcony from living room

## APARTMENT B6

78m<sup>2</sup> / 839ft<sup>2</sup>





## 2 BEDROOM UNITS

- Entrance into open plan kitchen and a large spacious dining & living room
- Large windows to maximise flow of natural light  
Private balcony accessible through living room  
Large sliding door giving a sense of delightful view
- Private laundry area  
One Master ensuite bedroom and a common bathroom
- 
- One bedroom with ample closet space and large windows  
Ideal spacious study room with nicely done shelves
- 
- Access to balcony from living room

## APARTMENT C4

94m<sup>2</sup> / 1012ft<sup>2</sup>



# APARTMENT C1

96m<sup>2</sup> / 1033ft<sup>2</sup>



# APARTMENT C2

100m<sup>2</sup> / 1076ft<sup>2</sup>



# APARTMENT C3

102m<sup>2</sup> / 1098ft<sup>2</sup>





# APARTMENT A2

## 3 BEDROOM UNIT

135m<sup>2</sup> / 1453ft<sup>2</sup>

- Entrance into the spacious dining room and cosy living room
- Semi-open plan kitchen with imported fittings
- Three commodious bedrooms with two master enstuit plus one common bathroom  
Large and pravite laundry area
- Large sliding door to the balcony that gives you
- breathtaking view.



# APARTMENT A1

## 3 BEDROOM UNIT with DSQ

173m<sup>2</sup> / 1862ft<sup>2</sup>

- Large and spacious entrance to the living room with a semi-open plan kitchen fitted with imported appliances
- Large windows to maximize flow of natural light
- Two commodious master ensuit with a self contained DSQ  
Private laundry area
- Two big and private balconies with access from master bedroom and living room that give you a sense of delightful view





# SOCIAL AMENITIES

## SHOPPING CENTERS

- One Padmore Place Shopping mall
- Carrefour Supermarket
- Yaya Center
- Quickmart Chaka Road
- Hurlingham Shopping Center
- Prestige Plaza

## EDUCATION CENTRES

- St Nicholas Kindergarten
- Good Shepherd Nursery School
- St. Christopher's Prep. Sch - Pri
- Islamia School & Mosque
- St Joseph Ecumenical School
- St Nicholas School
- St. Nicholas Senior School
- Light Academy Secondary School
- French School
- Gateway Talent School
- Flendale College
- Aliphaxe Foreign Language Centre
- Tegemeo Institute Of Agricultural Policy & Development
- University of Eastern Africa Baraton

## HOSPITALS

- Coptic Hospital
- The Nairobi Womens Hospital

- Menelik MedicalCenter
- Nairobi Hospital
- Kenyatta National Hospital

## PHARMACIES

- Lifemed Pharmacy Hurlingham
- Malibu Pharmacy Ltd
- Goodlife Pharmacy Shell Hurlingham
- Linkemmed Pharmacy
- Providence Pharmacy
- Luxcare Pharmacy
- Aible Pharmacy-Yaya
- Rosegate Pharmacy
- Neem Pharmacy Kilimani

## GOVERNMENT & SECURITY

- Kilimani Police Station
- Department Of Defence
- Embassy of Ethiopia
- Embassy of China
- Clinical Officers Council

## GYMS & SPORTS FACILITIES

- Royal Nairobi Golf Club
- Supercharged holistic health club
- Peak Performance International
- Suluhisho Fitness Studio
- Total Lifestyle Change

- Lifefitness (Fitnessfirst)
- Weight Watchers Kenya Outdoor & Indoor Fitness

## MOSQUES & CHURCHES

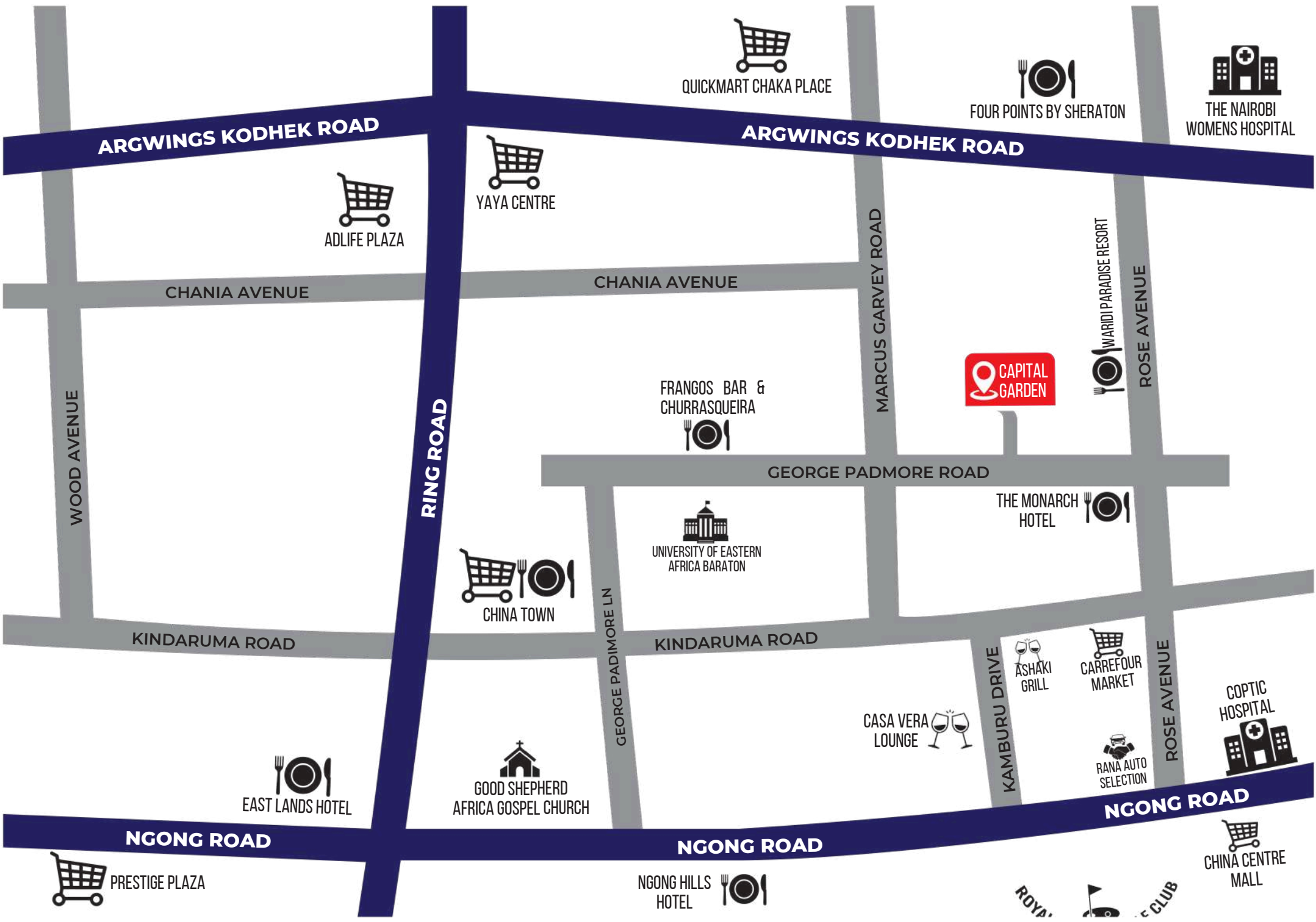
- Nairobi Baptist Church
- Good Shepherd Africa Gospel Church
- Nairobi Baptist Church Court
- World Awakening church Hurlingham
- Nairobi Central church of the Nazarene
- Masjid Rahma Mosque
- Adams Masjid and Islamic Centre

## RESTAURANTS & PUBS

- Black Samurai Lounge
- Empire Kilimani Lounge & Grill
- Frangos Bar & Churrasqueira
- Blackyz Lounge
- Ashaki Grill
- The Vibe Tamasha Lounge (Hurlingham)
- Ozone Grill Bar and Grill
- Casa Vera Lounge

## HOTELS

- Waridi Paradise Hotel and Suites
- Four Points by Sheraton
- Eastlands Hotel
- Wida Resorts
- The Monarch Hotel



ARGWINGS KODHEK ROAD

ARGWINGS KODHEK ROAD

CHANIA AVENUE

CHANIA AVENUE

GEORGE PADMORE ROAD

KINDARUMA ROAD

KINDARUMA ROAD

NGONG ROAD

NGONG ROAD

NGONG ROAD

WOOD AVENUE

RING ROAD

MARCUS GARVEY ROAD

ROSE AVENUE

WARDHI PARADISE RESORT

CAPITAL GARDEN

QUICKMART CHAKA PLACE

FOUR POINTS BY SHERATON

THE NAIROBI WOMENS HOSPITAL

ADLIFE PLAZA

YAYA CENTRE

FRANGOS BAR & CHURRASQUEIRA

THE MONARCH HOTEL

UNIVERSITY OF EASTERN AFRICA BARATON

CHINA TOWN

EAST LANDS HOTEL

GOOD SHEPHERD AFRICA GOSPEL CHURCH

CASA VERA LOUNGE

ASHAKI GRILL

CARREFOUR MARKET

RANA AUTO SELECTION

COPTIC HOSPITAL

CHINA CENTRE MALL

NGONG HILLS HOTEL

ROYAL

CLUB



**Capital GARDEN**  
Where Urban Living Comes Natural

**ADIA CRESCENT KENYA LIMITED**  
**George Padmore Road, Kilimani,**  
**Nairobi - Kenya**

**Sales Office**

**:+254788187261/+254721988282**

